



# WOODWORDS ON THE BRANDYWINE

[www.delawarewoodworkers.org](http://www.delawarewoodworkers.org)

Webmaster: Richard Dell

## Woodworkers Guild Officers for 2016

---

President: George  
Hoffman

VP: Jim Stevens

Treasurer: Jeremy Noblitt

Newsletter:

Hans Francke  
Matt Given

Librarian: Ron Hasse

Raffle Manager:  
Peter Leavens

Webmaster: Richard Dell

Program Committee:

John McCormick  
Jim Kirkbride  
Wayne Scholz

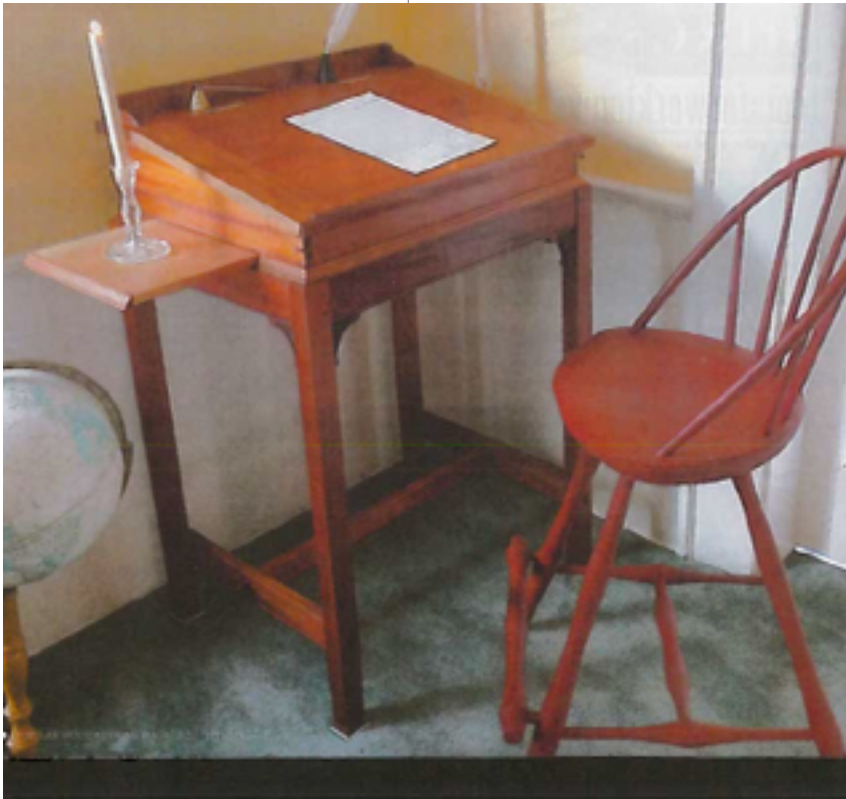
## Christmas ornaments, the home stretch:

Last chance to bring your christmas ornament creations to the November 16 meeting.

We will decorate a 4 foot Christmas tree for the Cokesbury Village Project. Trees will be on display from Thanksgivings and are auctioned off with proceeds benefiting Hospice Delaware. Our tree will be set up on the 17th, please contact Wayne Scholz if you can help: (410) 398-7115; you will be able to see a great selection of decorated trees at Cokesbury Village.



2015 tree,  
can we top  
this?



## GROUP PROJECT

At the October meeting we voted to make this desk as a group project, described in Popular Woodworking of February 2016. A separate [pdf file](#) will be sent together with the newsletter. The project consists of constructing the base (essentially a table) and a slanted top with a sliding platform. The appearance is 19th century, a lumber list is included in the pdf description file. Several members have offered their shop as workspace for this project,

Bruce Evans has offered walnut for this project. Shall we make two, in different woods? Auction one off via Woodcraft? Or, does any member has an absolute need for a standing desk? Come prepared to sign up, participate and accomplish a nice project.

Report on the lathe meister on page 5.

## 2016 ornaments, jolly season!



German ornaments,  
Jim Kirkbride,

how about plywood?  
Jeremy Noblitt



Candy canes from pencils, such a pleasure, did not record your names, sorry.



## Notices:

#### Woodturners do meet the second Wednesday of the month, at Woodcraft.

\*\*\*\*\*The Delaware Miniature Club meets the third Thursday of the month at:

New Castle Senior Center  
400 South Street,  
New Castle, DE 19720

^^^^^^Please submit your art and craft to Rich Dell to be posted on our website.

@@@Have woodworking friends? Invite them to our meetings!

\$\$\$\$\$Program Committee. We need reinforcements to continue to provide quality programs for our club. Contact Jim Kirkbride and help out.



I won the raffle, I am happy with my sanding paper!



Tim Sabo showed an auxiliary workbench of special cherry, just clamp on your base bench

## John Styer, lathe -master, showing his work, which type of wood did he not work with?

Pens of all sorts, vases, even poison ivy wood, yak! A delight to hear of his 30+ years of playing with wood still going strong!



Need to write, your choice! Catch him at his next exhibition!

\* Show and Tell.

Always some surprises! What have you been working on?

\* Ideas

Do you have a tip or a question? Bring these to the meeting.

\* Items for sale? News?

Let me know via email, including pictures.

Woodworkers Guild of Delaware  
38 Jay Drive  
New Castle, DE 19720

On the web: [www.delawarewoodworkers.org](http://www.delawarewoodworkers.org)

OPEN TO ALL WOODWORKERS, NOVICE TO EXPERT.

JOIN US!

MONTHLY MEETINGS: 3RD WEDNESDAY AT WOODCRAFT,



### **2016 Meetings**

September 21, 2016

October 19, 2016

November 16, 2016

December 21, 2016

### **Benefactors of the Guild:**

Please keep these friends in mind when you make purchases

[www.Woodcraft.com](http://www.Woodcraft.com)